

EXAMPLES OF SURVEY: INDOOR, OUTDOOR, SECTION

In this short guide we show you some examples of interior and exterior surveys, and some photos of the spaces with laser acquisition path highlighted and dxf scans derived from THE METER's devices processing.

You can download the scans by clicking [on this link](#)



Surveys Examples

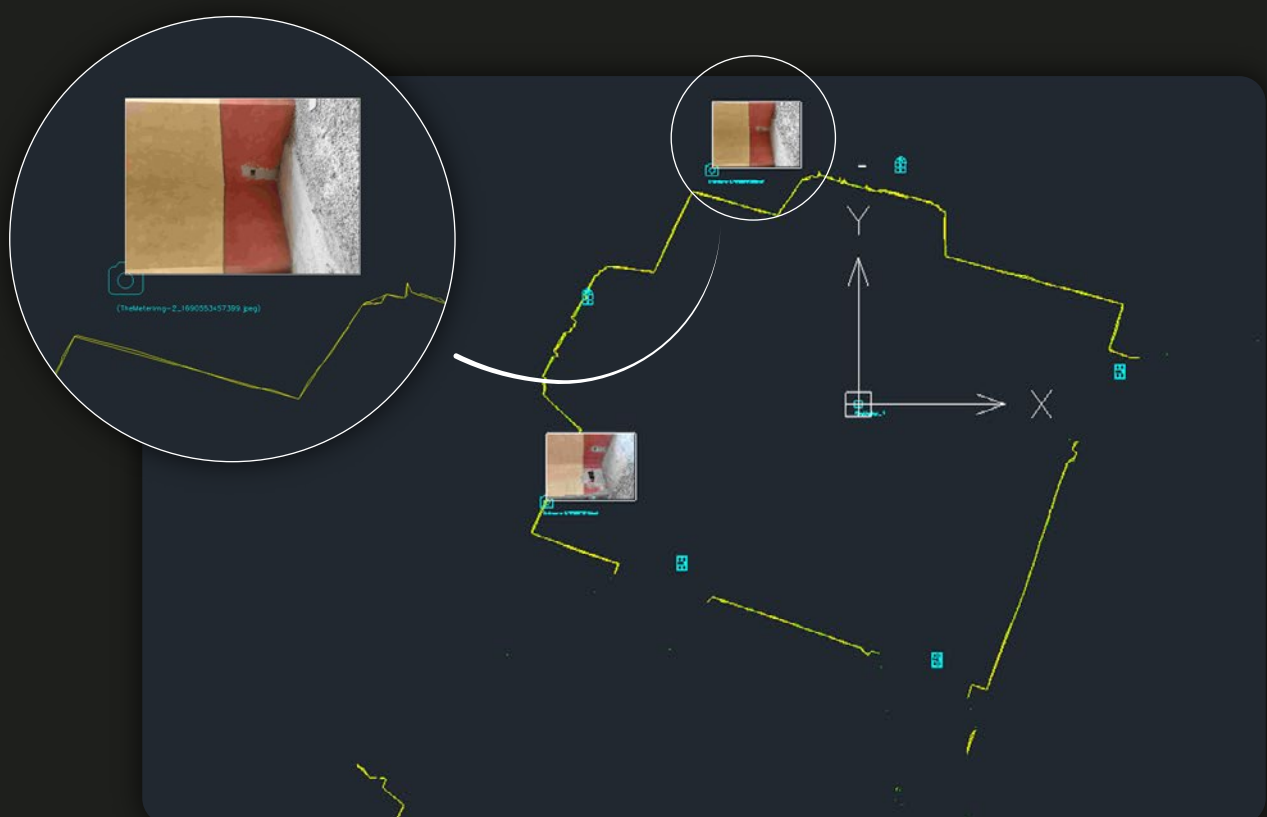


↓ continue ↓

Acquisition details:
Model used - **CUBE^{PRO}**
Exported file - .dxf
Mode: Automatic (first dxf preview) and Manual (second dxf preview)
Points struck 1600 - TOF (High-Speed Type)



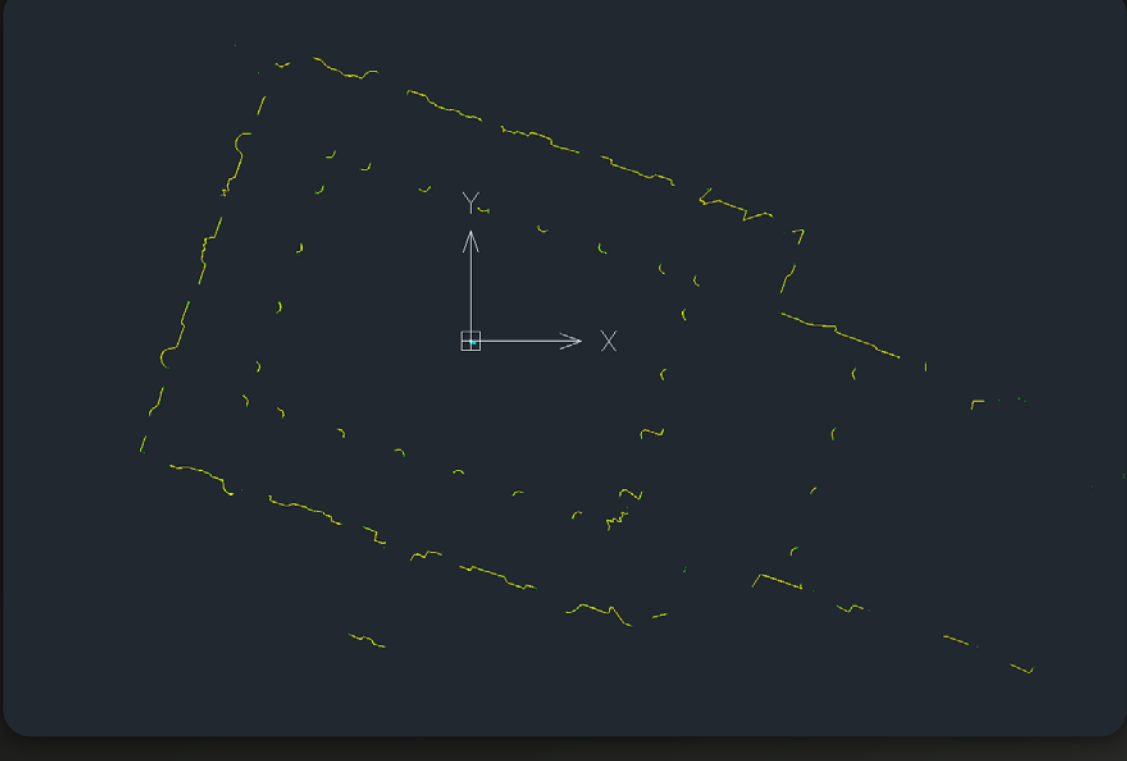
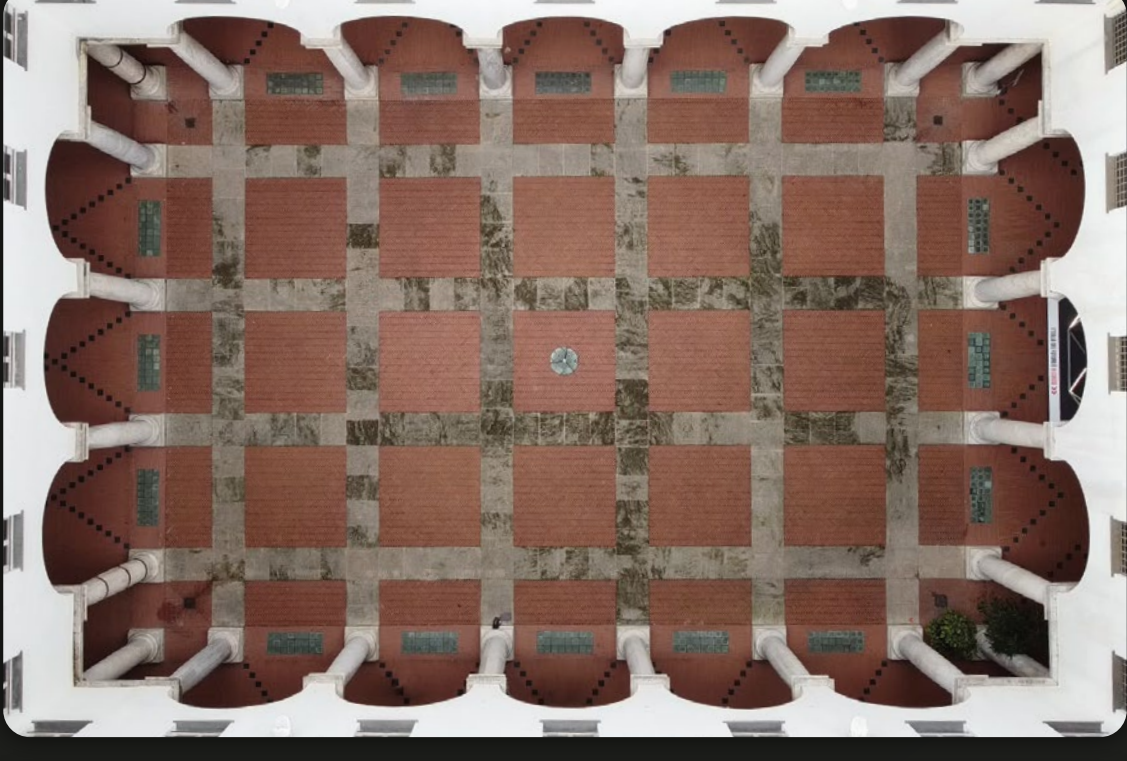
Automatic Survey
with photo marker insertion



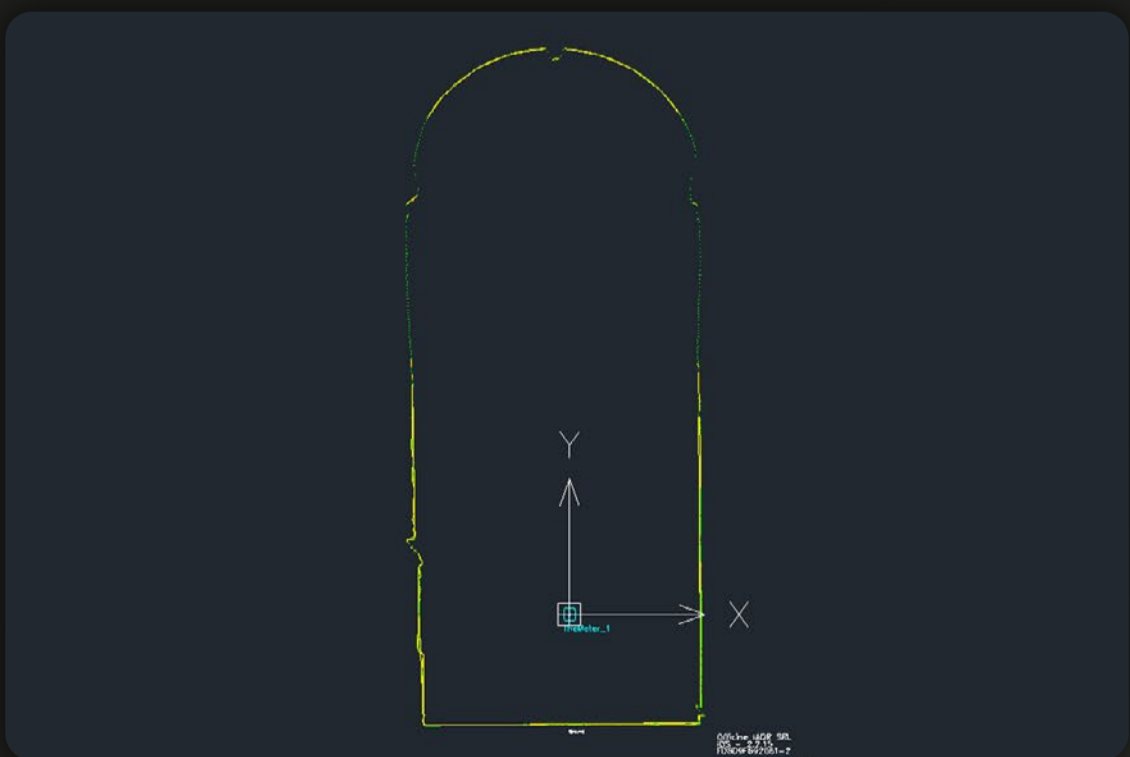
Manual Survey



Acquisition details:
Model used - **CUBE^{PRO}**
Exported file - .dxf
Mode: Automatic
Points struck 1600 - TOF (High-Speed Type)



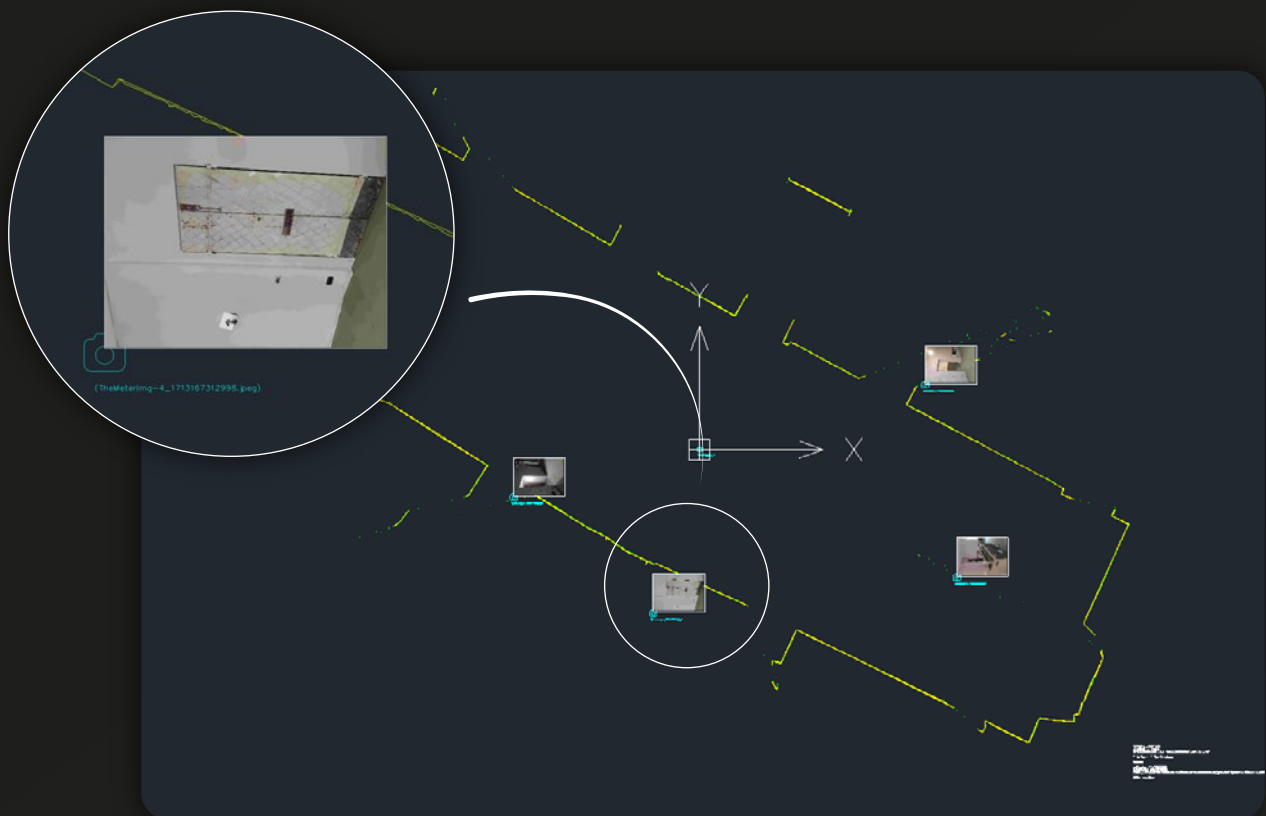
Acquisition details:
Model used - **CUBE^{PRO}**
Exported file - .dxf
Mode: Automatic Section
Points struck 1600 - TOF (High-Speed Type)



Acquisition details:
Model used - **CUBE2₆₀**
Exported file - .dxf
Mode: Automatic
Points struck 3200 - TOF (High-Speed Type)



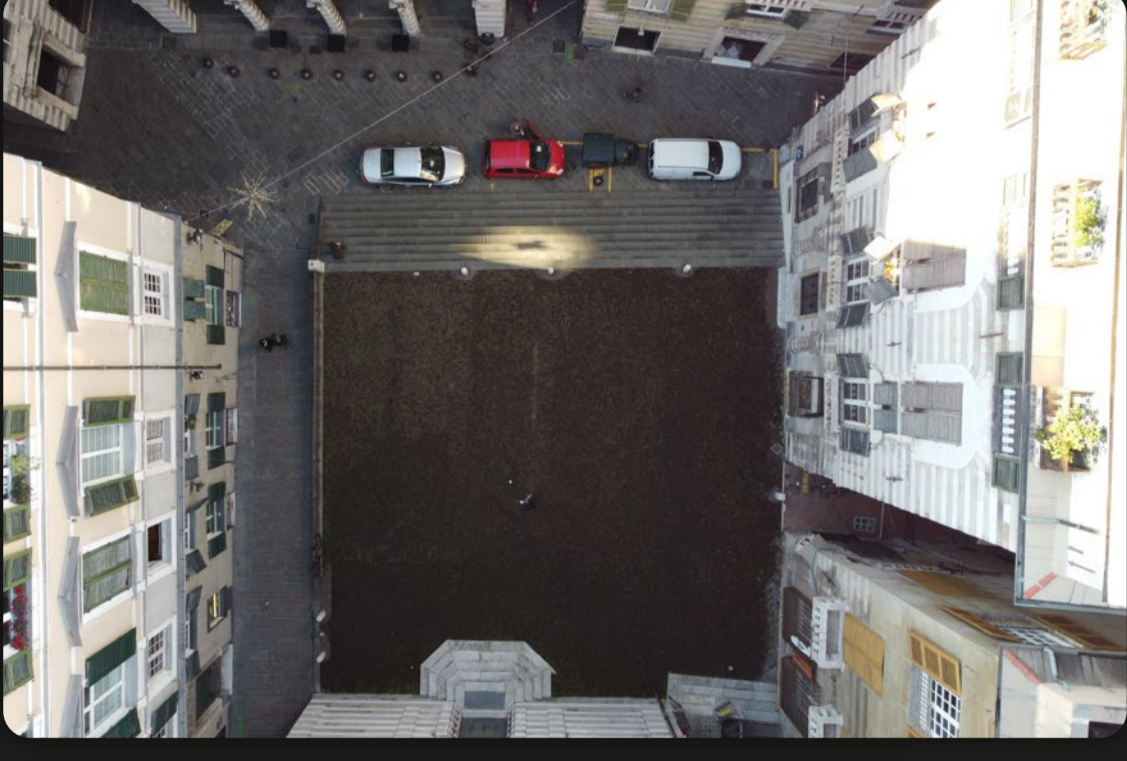
Automatic Survey
with photo marker insertion



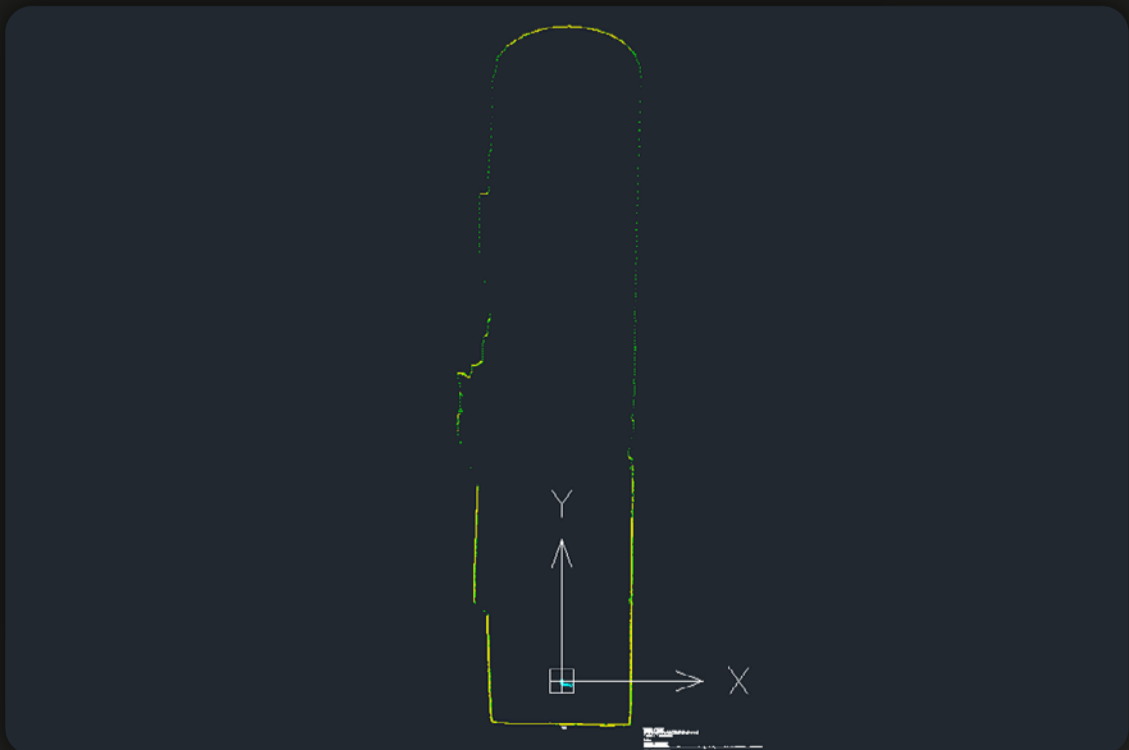
Acquisition details:
Model used - **CUBE260**
Exported file - .dxf
Mode: Automatic
Points struck 3200 - LASER (Millimetric-Accurated Type)



Acquisition details:
Model used - **CUBE260**
Exported file - .dxf
Mode: Automatic
Points struck 3200 - TOF (High-Speed Type)



Acquisition details:
Model used - **CUBE260**
Exported file - .dxf
Mode: Automatic Section
Points struck 3200 - TOF (High-Speed Type)



Acquisition details:
Model used - **CUBE2**₆₀
Exported file - .dxf
Mode: Automatic Multiscan
Points struck 3200 - TOF (High-Speed Type)

